

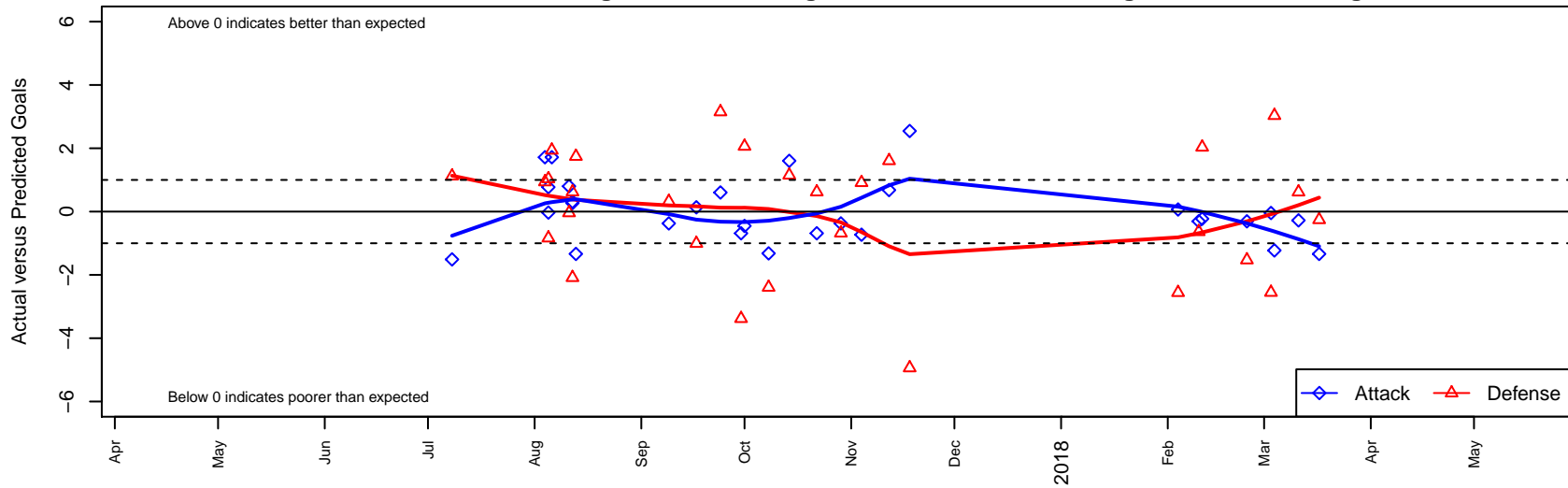
# Capital FC Timbers Red G04

Cascade Futbol Club/Capital FC  
 Salem, OR  
 G04 total strength=1314  
 attack=8.98 defense=3.93  
 fall league = PTT G04 Premier Red  
 spr league = Spr OYS G04 Premier White  
 notes= Plechl 2016

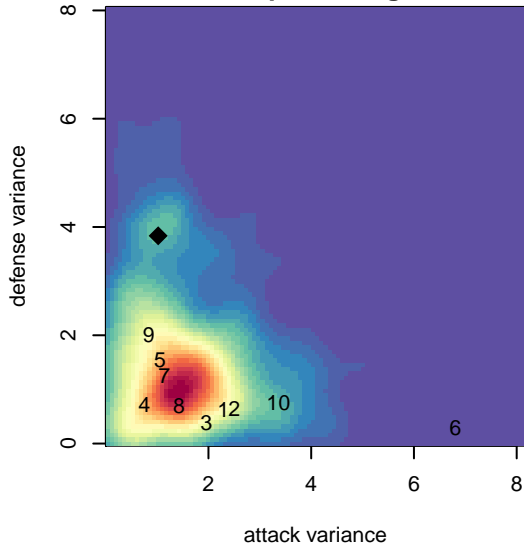
alt names used:  
 Capital FC Timbers 04G Plechl  
 CAPITAL FC TIMBERS 2004G RED  
 CAPITAL FC TIMBERS 2004G RED (OR)  
 CFC 04G Red  
 Capital FC Timbers 04G Plechl

Venues played:  
 2017 PCU Summer Classic U13-U14 Gold  
 2017 Mt Hood Challenge U14 Gold  
 2017 Bend Premier Cup Lindsey Horan (Gold)  
 2017 PTT G04 Premier Red  
 2017 Spr OYS G04 Premier White

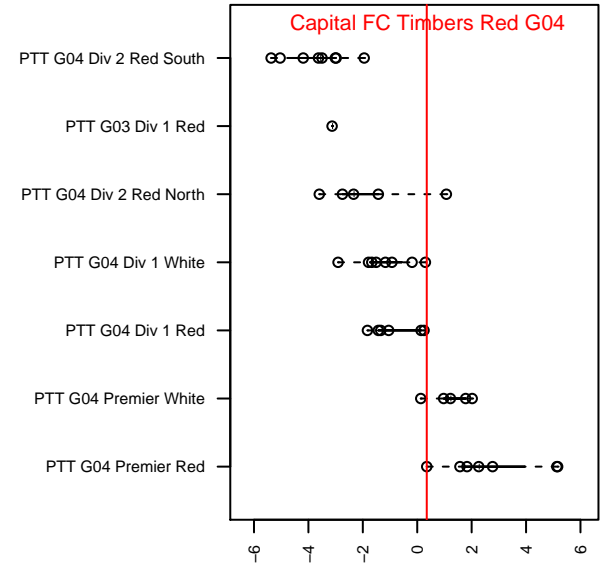
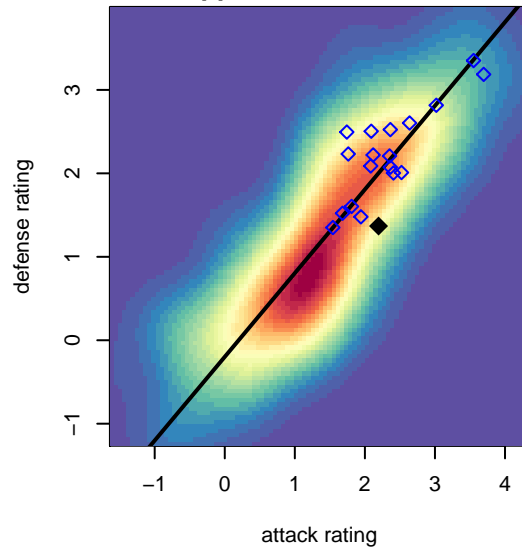
**Capital FC Timbers Red G04**  
 Dots are actual minus expected GF (blue circles) and GA (red triangles).  
 Blue line is smoothed change in attack strength. Red is smoothed change in defense strength.



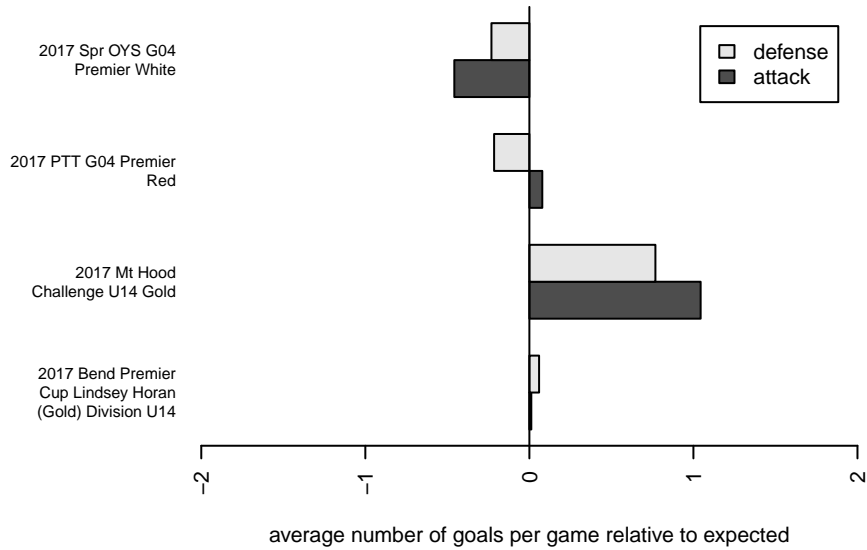
**attack and defense variance (black dot)  
relative to other teams  
and top 10 in region**



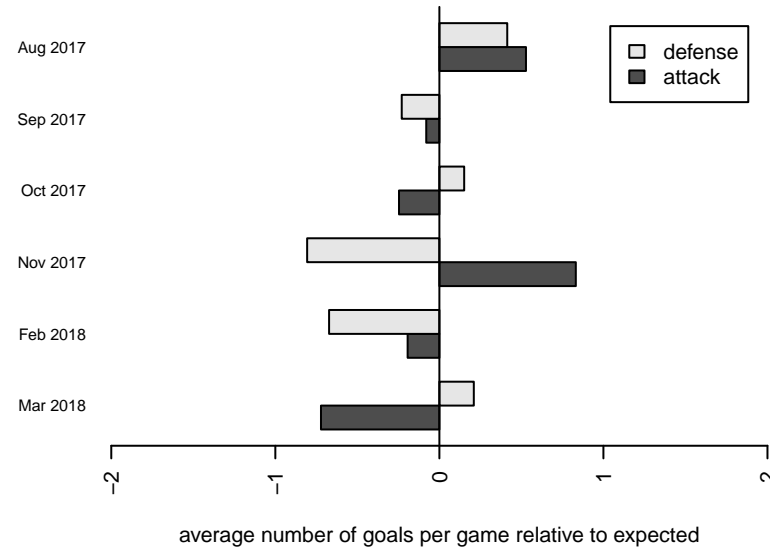
**attack and defense rating  
relative to others at age  
and all opponents in last 13 months**



**Performance relative to 13 month average**



**Performance relative to 13 month average**



| date     | home                              |    | away                         |    | venue                                    | pred.home | pred.away |
|----------|-----------------------------------|----|------------------------------|----|--|-----------|-----------|
| 18-03-17 | Capital FC Timbers Red G04        | 0  | NEU White G04                | 2  | 2017 Spr OYS G04 Premier White           | 1.34      | 1.74      |
| 18-03-11 | Capital FC Timbers Red G04        | 2  | WAFCL Lightning G04          | 1  | 2017 Spr OYS G04 Premier White           | 2.28      | 1.62      |
| 18-03-04 | Capital FC Timbers Red G04        | 0  | Bend FC Timbers Red G04      | 0  | 2017 Spr OYS G04 Premier White           | 1.23      | 3.03      |
| 18-03-03 | Capital FC Timbers Red G04        | 2  | FC Portland Navy G04         | 4  | 2017 Spr OYS G04 Premier White           | 2.04      | 1.45      |
| 18-02-24 | Washington Timbers Red 2 G04      | 4  | Capital FC Timbers Red G04   | 1  | 2017 Spr OYS G04 Premier White           | 2.47      | 1.31      |
| 18-02-11 | Bend FC Timbers Red G04           | 1  | Capital FC Timbers Red G04   | 1  | 2017 Spr OYS G04 Premier White           | 3.03      | 1.23      |
| 18-02-10 | BSC Portland Black G04            | 2  | Capital FC Timbers Red G04   | 1  | 2017 Spr OYS G04 Premier White           | 1.36      | 1.31      |
| 18-02-04 | FC Salmon Creek Nemesis White G04 | 4  | Capital FC Timbers Red G04   | 1  | 2017 Spr OYS G04 Premier White           | 1.44      | 0.93      |
| 17-11-18 | Washington Timbers Red 1 G04      | 10 | Capital FC Timbers Red G04   | 3  | 2017 PTT G04 Premier Red                 | 5.06      | 0.45      |
| 17-11-12 | Capital FC Timbers Red G04        | 2  | THUSC Selenium Black G04     | 1  | 2017 PTT G04 Premier Red                 | 1.32      | 2.61      |
| 17-11-04 | Capital FC Timbers Red G04        | 0  | Westside Timbers Copa TS G04 | 2  | 2017 PTT G04 Premier Red                 | 0.73      | 2.91      |
| 17-10-29 | Capital FC Timbers Red G04        | 0  | Crossfire OR United ECNL G04 | 10 | 2017 PTT G04 Premier Red                 | 0.37      | 9.32      |
| 17-10-22 | Capital FC Timbers Red G04        | 0  | ETFC Akers Black G04         | 3  | 2017 PTT G04 Premier Red                 | 0.69      | 3.62      |
| 17-10-14 | Capital FC Timbers Red G04        | 2  | Eastside Timbers Red G04     | 7  | 2017 PTT G04 Premier Red                 | 0.40      | 8.15      |
| 17-10-08 | THUSC Selenium Black G04          | 5  | Capital FC Timbers Red G04   | 0  | 2017 PTT G04 Premier Red                 | 2.61      | 1.32      |
| 17-10-01 | Capital FC Timbers Red G04        | 0  | Washington Timbers Red 1 G04 | 3  | 2017 PTT G04 Premier Red                 | 0.45      | 5.06      |
| 17-09-30 | ETFC Akers Black G04              | 7  | Capital FC Timbers Red G04   | 0  | 2017 PTT G04 Premier Red                 | 3.62      | 0.69      |
| 17-09-24 | Eastside Timbers Red G04          | 5  | Capital FC Timbers Red G04   | 1  | 2017 PTT G04 Premier Red                 | 8.15      | 0.40      |
| 17-09-17 | PCU Red 1 G04                     | 3  | Capital FC Timbers Red G04   | 1  | 2017 PTT G04 Premier Red                 | 1.99      | 0.86      |
| 17-09-09 | Crossfire OR United ECNL G04      | 9  | Capital FC Timbers Red G04   | 0  | 2017 PTT G04 Premier Red                 | 9.32      | 0.37      |
| 17-08-13 | Capital FC Timbers Red G04        | 0  | NEU White G04                | 0  | 2017 Bend Premier Cup Lindsey Horan (Gol | 1.34      | 1.74      |
| 17-08-12 | Capital FC Timbers Red G04        | 1  | Westside Timbers Copa TS G04 | 5  | 2017 Bend Premier Cup Lindsey Horan (Gol | 0.73      | 2.91      |
| 17-08-12 | Capital FC Timbers Red G04        | 1  | ETFC Akers Black G04         | 3  | 2017 Bend Premier Cup Lindsey Horan (Gol | 0.69      | 3.62      |
| 17-08-11 | Capital FC Timbers Red G04        | 2  | Rocklin YSC Navy G04         | 3  | 2017 Bend Premier Cup Lindsey Horan (Gol | 1.20      | 2.96      |
| 17-08-06 | Capital FC Timbers Red G04        | 3  | MRFC Blue G04                | 0  | 2017 Mt Hood Challenge U14 Gold          | 1.28      | 1.94      |
| 17-08-05 | Capital FC Timbers Red G04        | 2  | Bend FC Timbers Red G04      | 2  | 2017 Mt Hood Challenge U14 Gold          | 1.23      | 3.03      |
| 17-08-05 | Capital FC Timbers Red G04        | 2  | Sting SC Timbers Red G04     | 2  | 2017 Mt Hood Challenge U14 Gold          | 2.03      | 1.16      |
| 17-08-04 | Capital FC Timbers Red G04        | 3  | MRFC Blue G04                | 1  | 2017 Mt Hood Challenge U14 Gold          | 1.28      | 1.94      |

| <b>date</b> | <b>home</b>   |   | <b>away</b>                |   | <b>venue</b>                         | <b>pred.home</b> | <b>pred.away</b> |
|-------------|---------------|---|----------------------------|---|--------------------------------------|------------------|------------------|
| 2017-07-08  | PCU Red 1 G05 | 0 | Capital FC Timbers Red G04 | 1 | 2017 PCU Summer Classic U13-U14 Gold | 1.12             | 2.51             |